

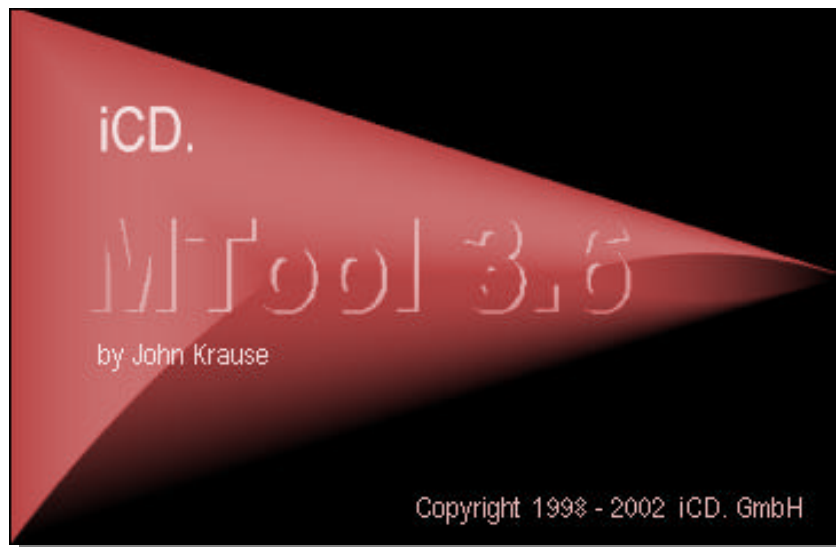
iCD. GmbH
Augustinusstr. 9d
50226 Frechen / Germany
TEL +49-2234-96634-0
FAX +49-2234-96634-90
e-mail: info@icd.biz
web: <http://www.icd.biz>

MTool3-Screen Mask Editor

Tool for easy design and customizing of LABS/Q® screen masks

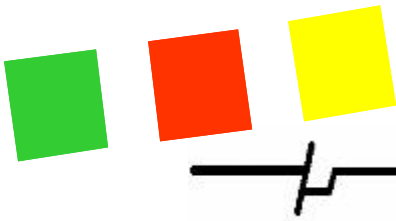
The company iCD. GmbH offers the screen mask editor **MTool3** as an add-on to the Laboratory Information Management System LABS/Q® (version 3.x).

This tool enables the customer to design the complete layout of his LABS/Q® application in a very convenient way and thus to adapt the appearance of LABS/Q® to his own ideas and needs.



Funktionen

- Visual screen mask editor in multi-document technique
- Dynamic display of mask modifications within LABS/Q®
- Storage of the complete layout data directly in the database
- Release ability because of layer concept (mask groups)
- supports setup/rearrangement of multilingual screen masks
- supports adaptation of the LABS/Q® main menu.
- Object data controls visibility of form components during runtime.
- Comfortable handling of mask projects due to structuring elements and object inspector
- hierarchic copy functions
- global text objects for multiple reuse
- optionally global object groups for multiple reuse
- Export/import function
- Multilingual **MTool3** user interface, online help and documentation
- Mask-Difference-Check



General

MTool3 offers a comfortable and dynamic way for the customizing of LABS/Q® mask and menu layout.

The multilayer storage concept of **MTool3** is based on the given LABS/Q® database structure. It allows you to redesign existing masks, create new ones or modify the menu arrangement to your personal preferences without touching the layout of the LABS/Q® standard mask set.

What does dynamic mean?

Change the mask layout in **MTool3**, write changes to database, that's all!

Without need of any further programming work, LABS/Q® will load the modified masks dynamically from database and display them in its user interface.

Immediately, you can check out the appearance of the modified mask within the LABS/Q® runtime environment and thus you may directly control the functionality and acceptance of the new mask design.

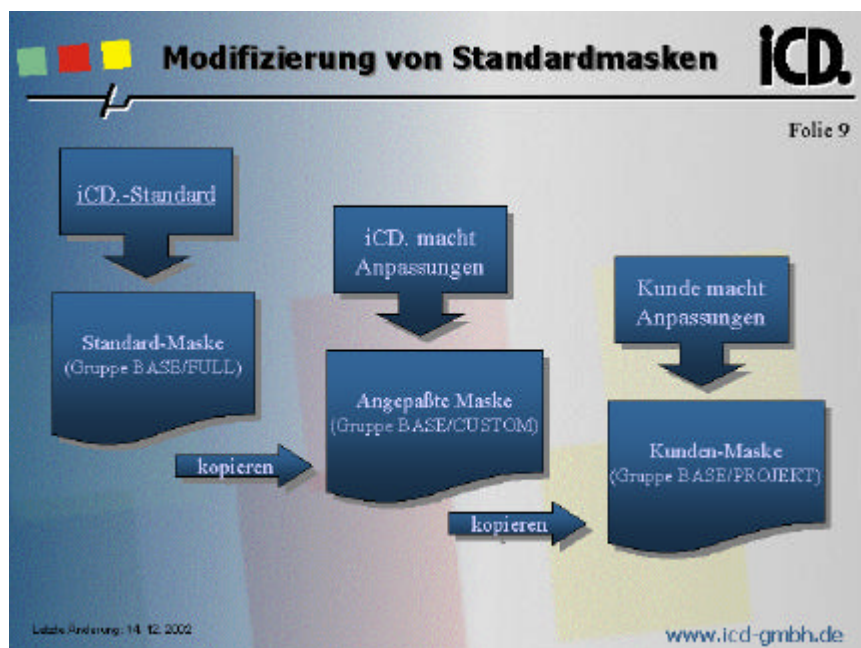
Multilingual masks

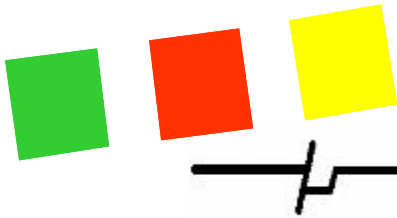
The object concept of the mask layout allows an multilingual definition of text objects. For mask captions, table titles as well as field labels you can maintain the needed translations. This allows changing of the mask language in an instant.

Even if your system is spread over diverse locations with different languages, the multilingual concept of **MTool3** ensures that your customized masks and menu bars will be displayed at each workplace.

Release ability and flexibility due to the layer concept

The definition of different mask groups enables you to cover the standard LABS/Q® masks by a layer of customized masks. Thus, the strategy of displaying different mask layers may be ruled mask group controlled or even user controlled. Masks which have not been redefined in a certain mask group will be replaced automatically by the mask of the superior mask group. If even the superior mask group does not contain the corresponding mask, at least the standard mask will be displayed





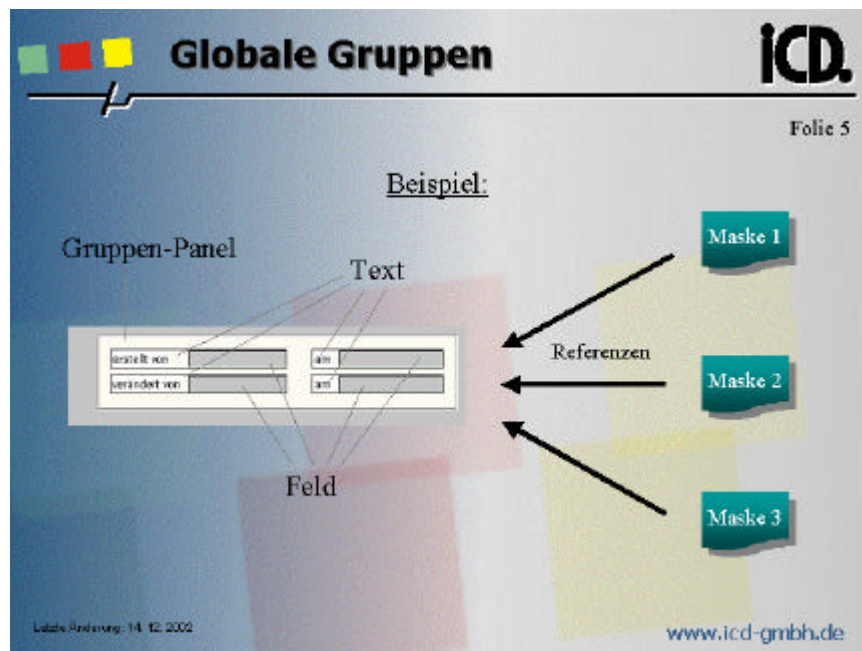
In this way, the standard layer of LABS/Q® can be replaced anytime by a new mask release version, whereas the customer designed layers or groups remain unchanged.

This concept holds up the full release ability without affecting individual customer modifications. During a release change only the standard masks will be replaced by the new version. All modifications and customized mask layouts in your own mask group will remain untouched.

Optionally global reusable object groups

As a special feature, **MTool3** allows you to define reusable object groups. You just have to define such a group one time and then may be apply it multiple times in different masks by means of referencing.

The usage of object groups ensures an identical layout of field groups or panels in all masks. If you need to change the layout you just have to modify the global group and changes will be applied to all masks which contain the corresponding object group.

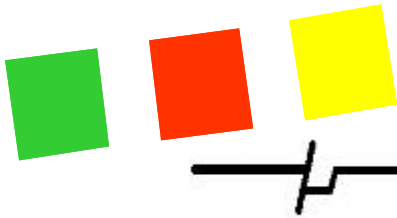


Multilingual layout concept

The text objects of masks are not only globally reusable but even may be defined multilingual (e.g. English, French, Italic, Thai, Chinese). By using references for text objects the language of a mask set can be immediately toggled.

Without need of a mask redesign you can make your LABS/Q system available for any required language just by maintaining the corresponding translations for text objects within the mask project.

All language translations can either be maintained directly in the masks or centrally in a language spanning and comfortable text matrix (see figure). Changes in the text matrix will be immediately applied to all referenced masks.



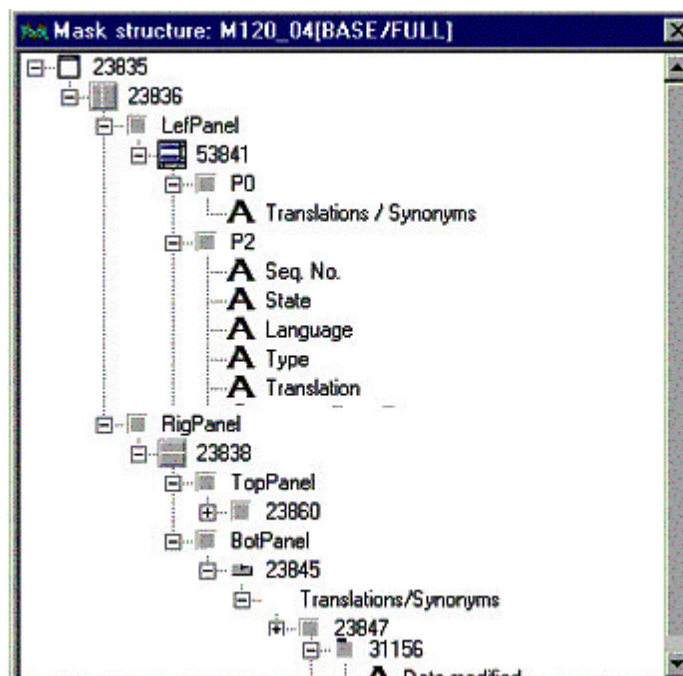
Modifying the LABS/Q® menu bar structure

MTool3 allows the complete rearrangement and adaptation of the LABS/Q® main menu bar. All modifications of the menu structure will be dynamically visualized in your individual LABS/Q® system since the complete **MTool3** data content is stored centrally in the LABS/Q® database.

MTool3 does not only offer an easy way for individual adaptations of masks but it furthermore allows a simple user-defined modification of the LABS/Q® menu structure in order to adapt the menu bar to company specific needs and workflows.

Tree view supports layout design

In addition to the common form view the mask design can be represented by a tree view structure. The tree view helps to find and delete objects by means of their symbols or names.



This clearly structured representation is well known from other Windows applications and supports you for a rapid retrieving of masks, object groups, mask panels and fields. At a glance, you will see all elements which belong to a certain mask or group. The tree view feature allows deleting of complete groups of objects in a very simple way.

Mask-Difference-Check

Significant changes of the mask design with respect to the LABS/Q® standard masks can be listed with detailed information and corresponding reports may be printed out.